

# School Inspection Program Cycle

The Lincoln County Health Department will use a three-year cycle for school inspections. This allows for school autonomy while also providing community safety, and encourages school leadership to become the experts on their school's safety measures. The cycle described and illustrated below provides a high-level overview of each year, setting clear expectations for all involved.

## Year One: Routine Inspection

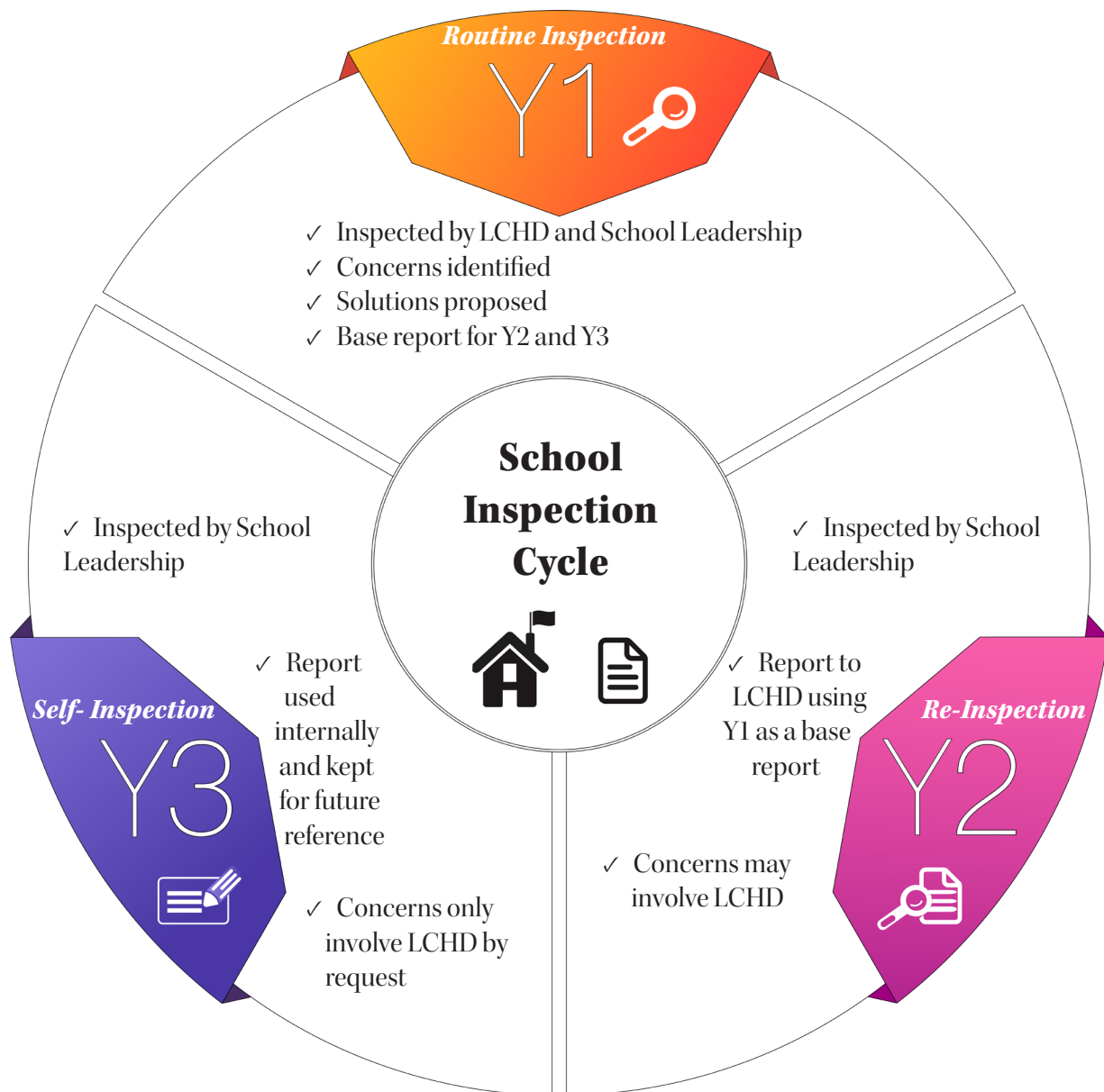
The LCHD and school leadership will complete the inspection together. Any concerns will be noted with solution options and timelines for adjustments.

## Year Two: Re-Inspection

School leadership inspects for safety and uses the initial report to update the LCHD on safety status. LCHD may come out to address any concerns and will support school proposed solutions.

## Year Three: Self-Inspection

School leadership provides the inspection and maintains the report from this year, but does not need to send it to LCHD. The school can request support from LCHD for any concerns, but there is no reporting requirement this year.



For more information, contact Lucy Sheridan at 509.725.1024 or [ls Sheridan@co.lincoln.wa.us](mailto:ls Sheridan@co.lincoln.wa.us)

